



2017 J/24 Summer Series Sailing Instructions

June through September, 2017
Lake Pend Oreille, Sandpoint, Idaho

Series Host and Organizing Authority:
Sandpoint Sailing Association &
J/24 Fleet 174



INVITATION: The U.S. J/24 Class Association Fleet 174, and the Sandpoint Sailing Association (SSA) invite J/24 sailors to participate in the 2017 Summer J24 Series to be held on Lake Pend Oreille in Sandpoint, Idaho.

ORGANIZING AUTHORITY: Sandpoint Sailing Association (SSA) and J24 Fleet 174

SERIES INFORMATION: The 2017 Summer J24 Series is governed by these Sailing Instructions (SI). If a sailor requires a paper copy of the Sailing Instructions please print this document as no paper copies will be otherwise made available. Additional information specific to the 2017 Summer J24 Series is provided below.

1. RULES

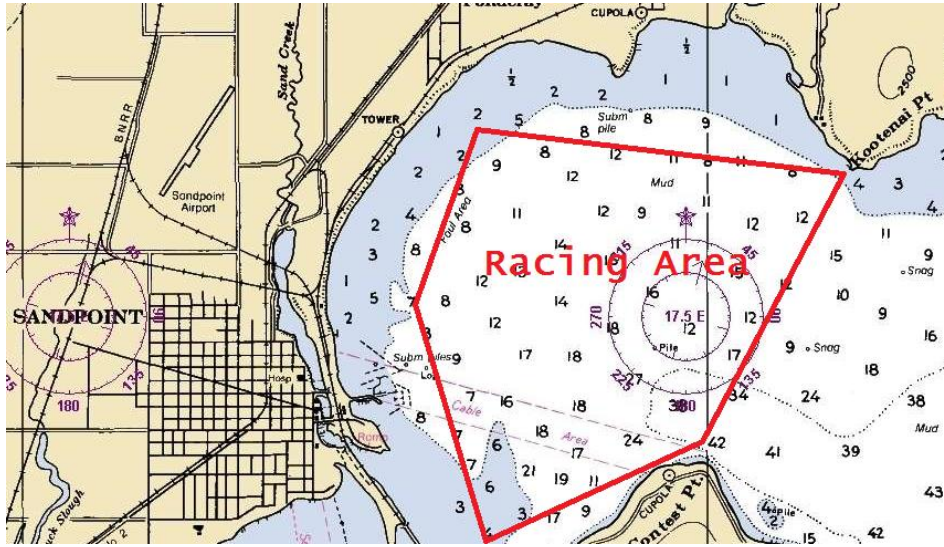
- 1.1 This race shall be governed by the Racing Rules of Sailing (2017 – 2020), and the International J24 Class Association (IJCA) class rules (effective 3/1/2016).
- 1.2 With permission of the IJCA the following IJCA class rules are modified:
- 1.3 IJCA rule 5.3 is changed to permit a boat to sail with different crew on different days.
- 1.4 Rule 42.3 will be changed as follows: The exception described in rule 42.3 (b) is deleted and replaced by the restriction described in IJCA Rule 8.2.2.

2. NOTICES TO COMPETITORS

- 2.1 The race committee may provide unofficial communication, which is communication not governed by the rules, at any time by hail or over VHF 72. A request for redress may not be based on any aspect of unofficial communication, including content, timeliness, or failure to hear. This changes RRS 62.1(a).
- 2.2 J24 Summer Series schedule of races is posted on the Sandpoint Sailing Association website under the calendar tab and labelled "J24 Races." Each day of racing will not begin before 9:00am.

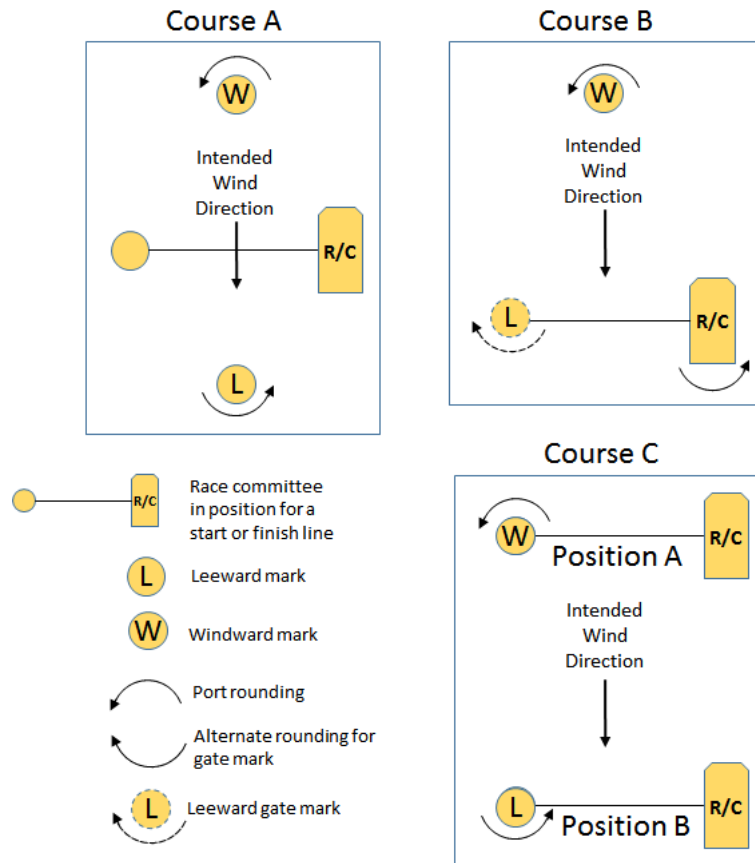
3. RACING AREA

- 3.1 Racing area shall be bounded by the RR Bridge to the south, Kootenai Point to the north, and Contest Point to the South East, unless notified by the Race Committee.



4. THE COURSES

- 4.1 The courses outlined in this section are all are windward – leeward for the Series for two laps, unless the Race Committee flies the shortened course flag, in which case the distance will be one lap. All mark rounding are taken on port, unless the course has a gate.



- 4.1.1 **Course A** Mid course start line is set on this course; all mark roundings will be taken on port. The course is sailed Start, Windward, Leeward, Windward, Leeward, Finish.
- 4.1.2 **Course B** The leeward mark and committee boat establish the start and finish line as well as the leeward gate. This course has a downwind finish. The course is sailed Start, Windward, Leeward Gate, Windward, and Finish.
- 4.1.3 **Course C** At the start line of race 1, the race committee boat is placed at position A for a windward start. After the start, the committee boat moves to position B to establish the finish line. The course is sailed Start, Windward, Leeward, Windward, and Finish. Race 2 is a downwind start with the committee boat at position B. After the start, the committee boat will move to position A to establish the finish line. This course is sailed Start, Leeward, Windward, Leeward, and Finish. Race 3 is a windward start with the committee boat at position A. After the start, the committee boat will move to position B to establish the finish line. This course is sailed Start, Windward, Leeward, Windward, Leeward, and Finish. If there is time available for a 4th or more races, the sequence starts again at Race 1 – Race 4, follows Race 1 instructions, Race 5 follows Race 2, Race 6 follows Race 3, repeat as necessary.

5. THE START

- 5.1 Races will be started by using Rule 26 with the warning signal made five (5) minutes before the starting signal

- 5.2 The starting line shall be between the course side of the port-end starting mark and the staff displaying an orange flag or course side of the starting mark on the starboard end.
- 5.3 A boat starting later than 10 minutes after her starting signal will be scored Did Not Start (DNS) without a hearing. This changes rule A4.

6. THE FINISH

- 6.1 The finishing line will be between the course side of the port-end finishing mark and the staff displaying an orange flag or course side of the finishing mark on the starboard end.

7. TIME LIMITS

- 7.1 Each race has a 90-minutes time limit. If no boat finishes within the time limit, the race will be abandoned. Failure to meet the time limit will not be grounds for redress. This changes rule 62.1
- 7.2 Boats failing to finish within 30 minutes after the first boat sails the course and finishes will be scored Did Not Finish without a hearing. This changes rules 35, A4, and A5.

8. PROTESTS

- 8.1 Fleet Captain shall be informed by a protesting boat for a request for a hearing as soon as practical. The Fleet Captain will assemble a Protest Committee, which will be comprised of a representative from two boats not involved in the incident, with the Fleet Captain breaking a tie decision, if necessary.
- 8.2 Protest forms will be available at the Fred's Deck. Requests for redress or reopening shall be made as close to the time of docking.. Notices of protests given to the Fleet Captain who will assemble the parties required to hold a hearing.
- 8.3 All hearings will be held in on the dinghy dock in the Windbag Marina unless inclement weather forces a hearing in the Bar of the Trinity at City Beach.

9. SCORING

- 9.1 Each race day will be individually scored according to A4. A boats overall score for the day will count as her series score. When fewer than 6 race days have been completed, a boats series score will be the total of her overall daily scores. When 6 or more days of racing are complete, a boats series score will be the total of her six best overall daily scores.

10. DISCLAIMER OF LIABILITY

- 10.1 Competitors participate in the regatta entirely at their own risk. See rule 4, Decision to Race.
- 10.2 Sailing is an activity that has an inherent risk of damage and injury. Competitors in this event are participating entirely at their own risk. See RRS 4, Decision to Race. The responsibility for a boat's decision to participate in a race or to continue racing is hers alone. The race organizers (organizing authority, race committee, protest committee, host club, sponsors, or any other organization or official) will not be responsible for damage to any boat or other property or the injury to any competitor, including death, sustained as a result of participation in this event. By participating in this event, each competitor agrees to release the race organizers from any and all liability associated with such competitor's participation in this event to the fullest extent permitted by

10.3 The organizing authority will not accept any liability for material damage or personal injury or death sustained in conjunction with or prior to, during, or after the series